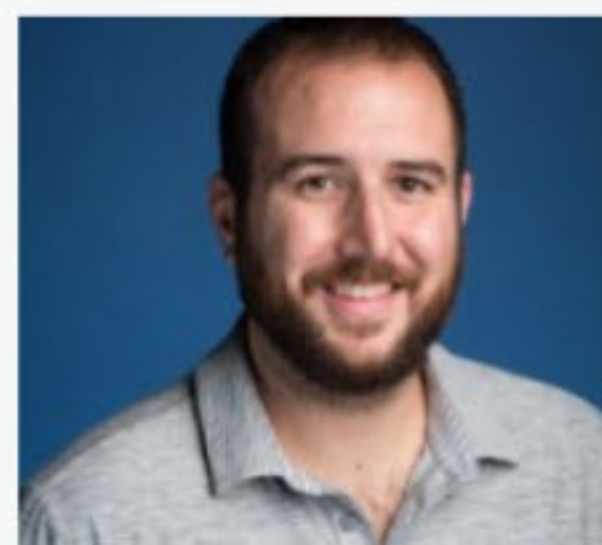
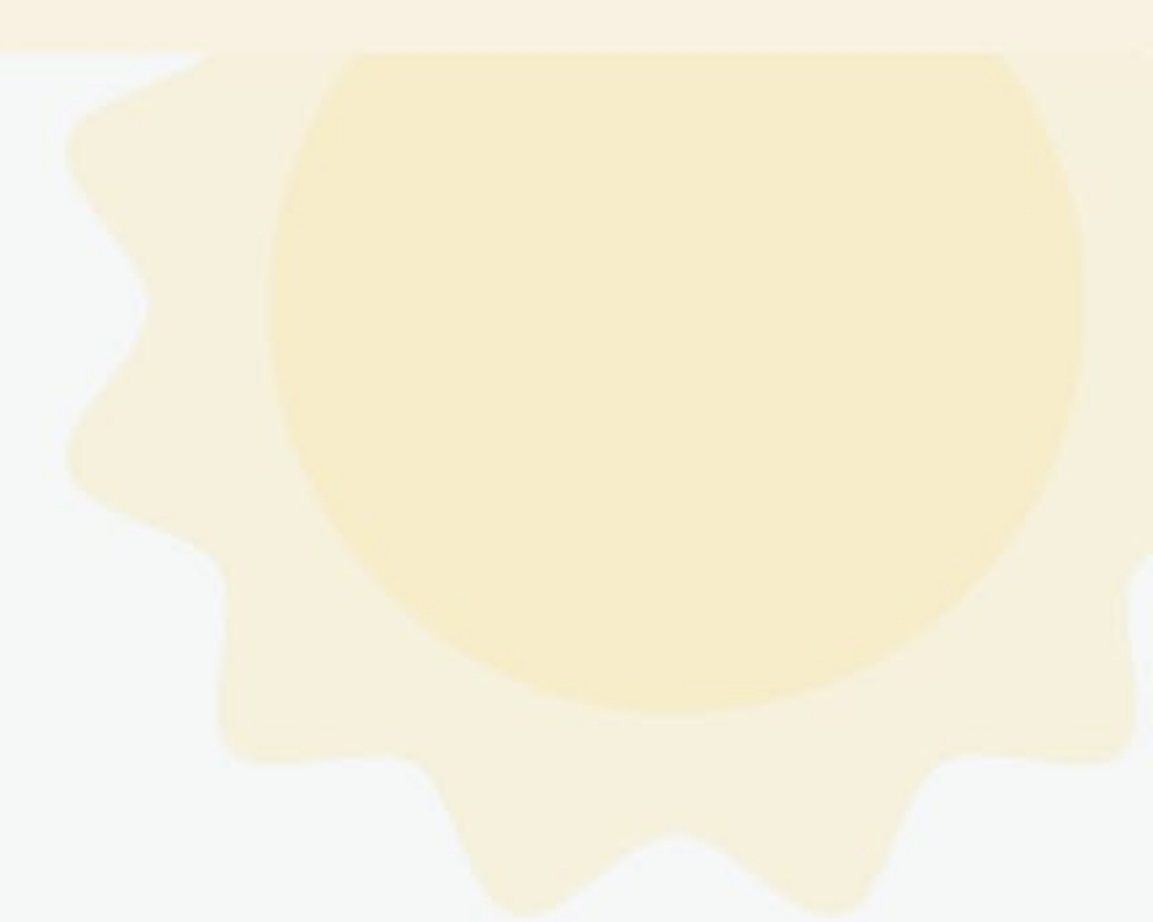


MentalHealth.com

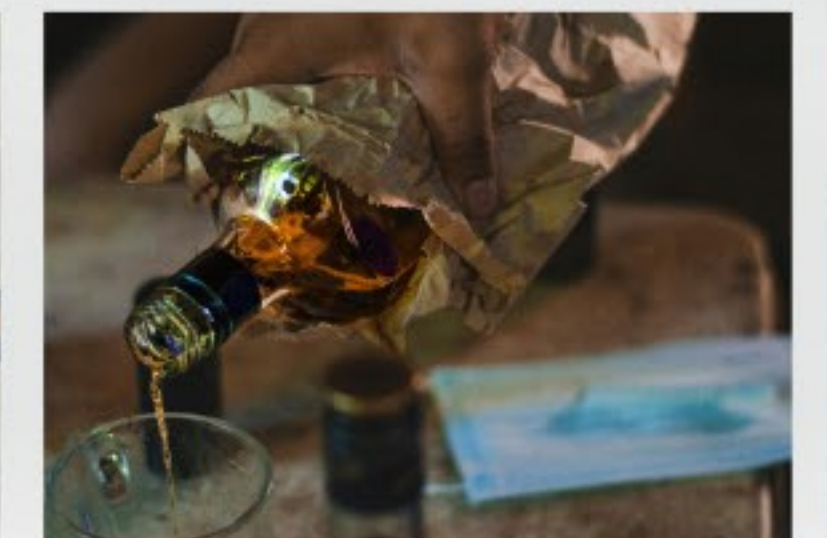
Every day is a great day



“Humanity is so disconnected, numb by all the things that we are taking: alcohol, sleeping pills, prescription drugs, stress, TV, media — madness. It’s just nonsense. Yet, we are expanding these, anchoring them within our lives.



~ Octavio Rettig
Author, Healer



MentalHealth.com
is a health technology



company
guiding people towards



self-understanding
and connection.



MentalHealth.com

**provides reliable resources,
accessible services, and
nurturing communities.**

A mobile app interface for MentalHealth.com. The background is a dark, moody landscape with a blue lake and a person jumping with arms outstretched. The text is white and yellow. At the bottom, there is a search bar and a search button.

Restore your mental health

Join our public beta for early
access to a healthier future.

Your feedback shapes
our platform.

What's on your mind?



Search



mentalhealth 17h



Our vision

MentalHealth.com



mentalhealth 17h



**is to support the
mental health of**

is the world's



mentalhealth 17h



**1,000,000,000
people** 

#1 mental health brand



Mission

Our mission is to develop the world's most **intelligent** mental health **technology**.
effective
supportive
caring
compassionate
loving

Purpose

Our purpose is to effectively **educate**, compassionately **support**, and naturally **empower** people in their pursuit of well-being.

Educate.



Support.



Empower.



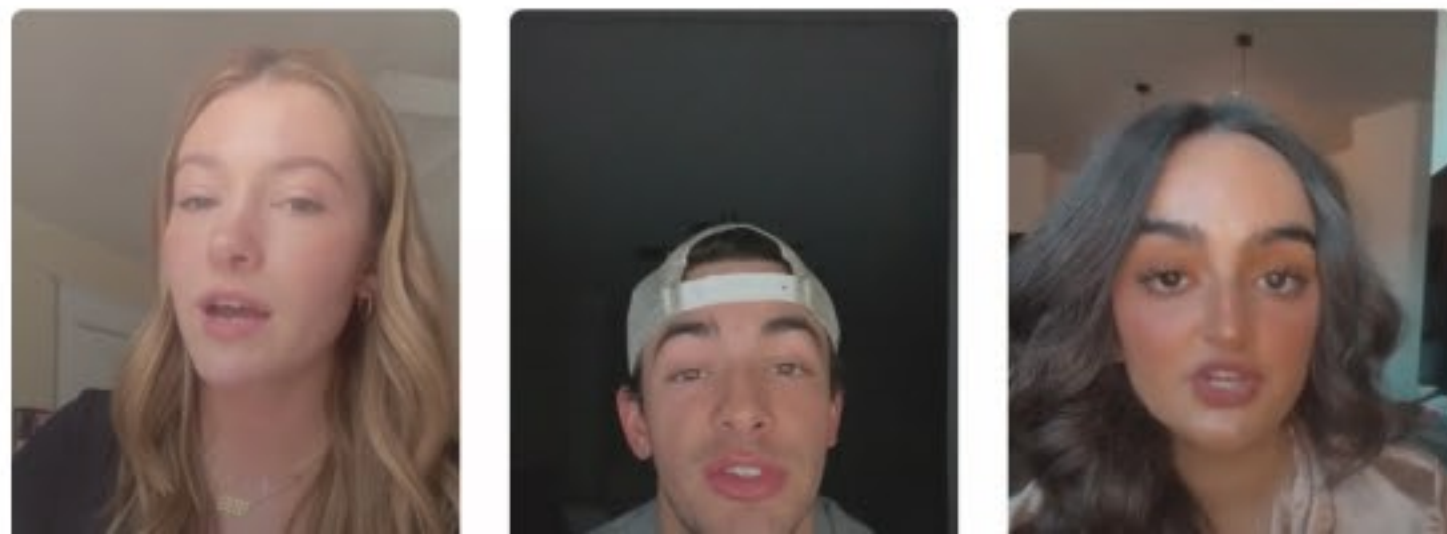
Approach

Our approach is to **establish connection** through our platform by offering a **resource library** and a **professionals directory** on our website.

Support your mental health

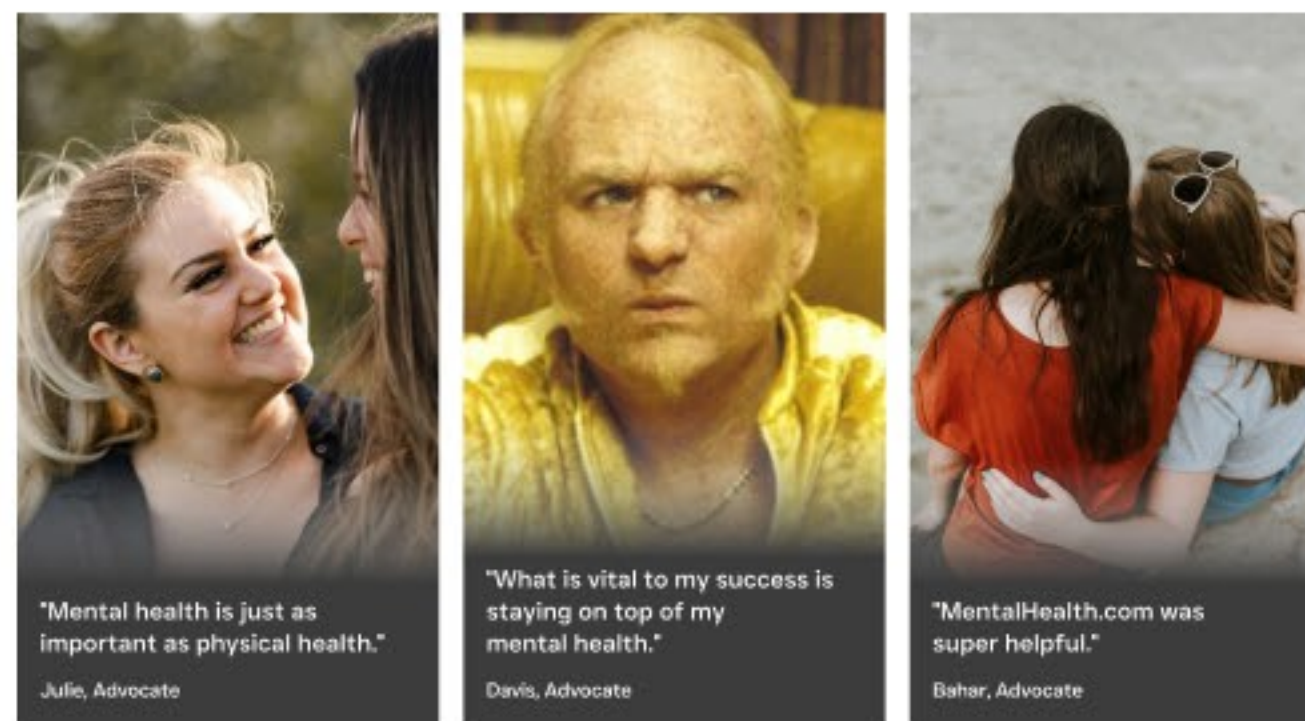
Join our public beta for early access to a healthier future. Your feedback shapes our platform.

Get started

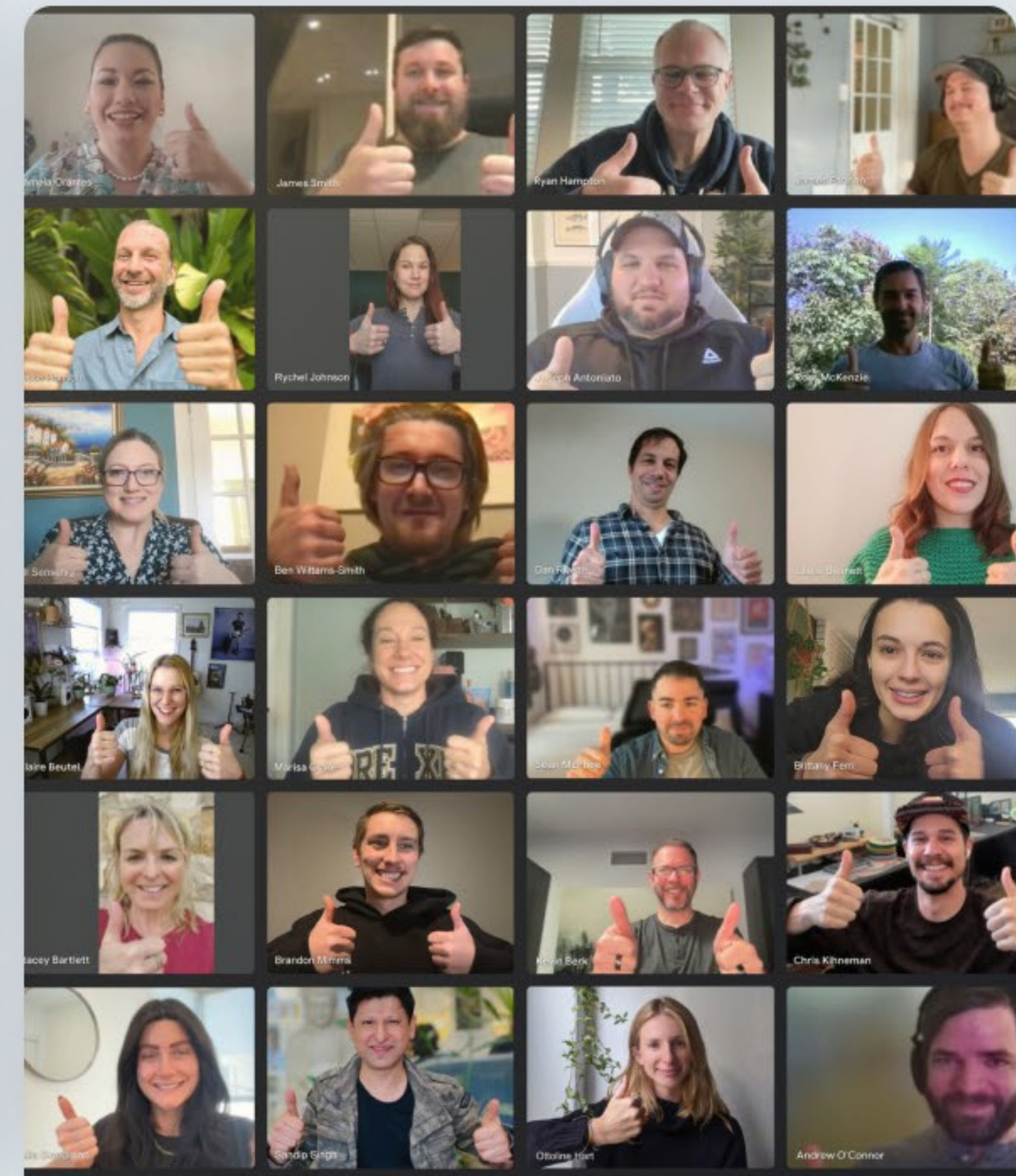


Reliable resources

Our trusted resources offer reliable and empowering mental health information and support.



Community connections



Focus

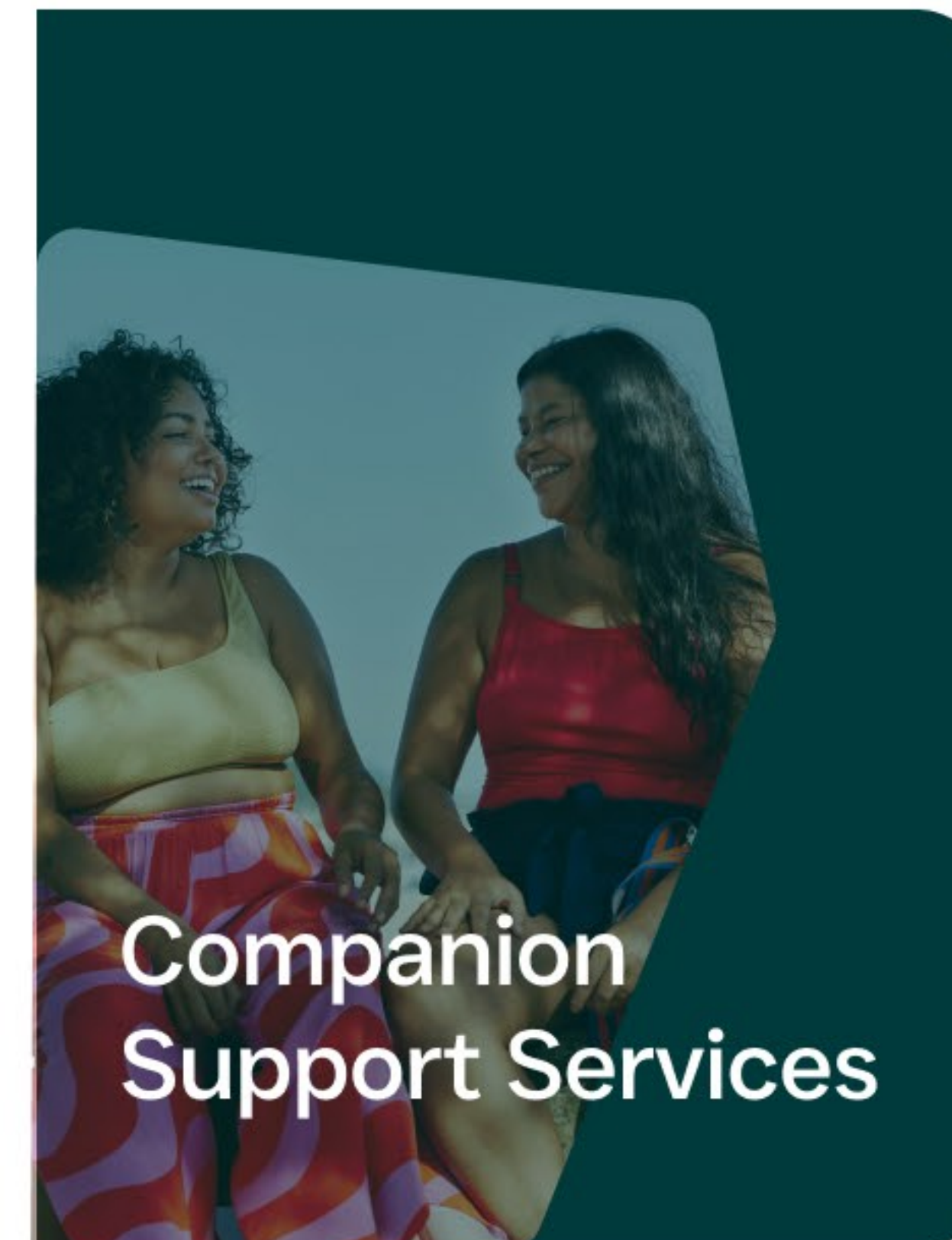
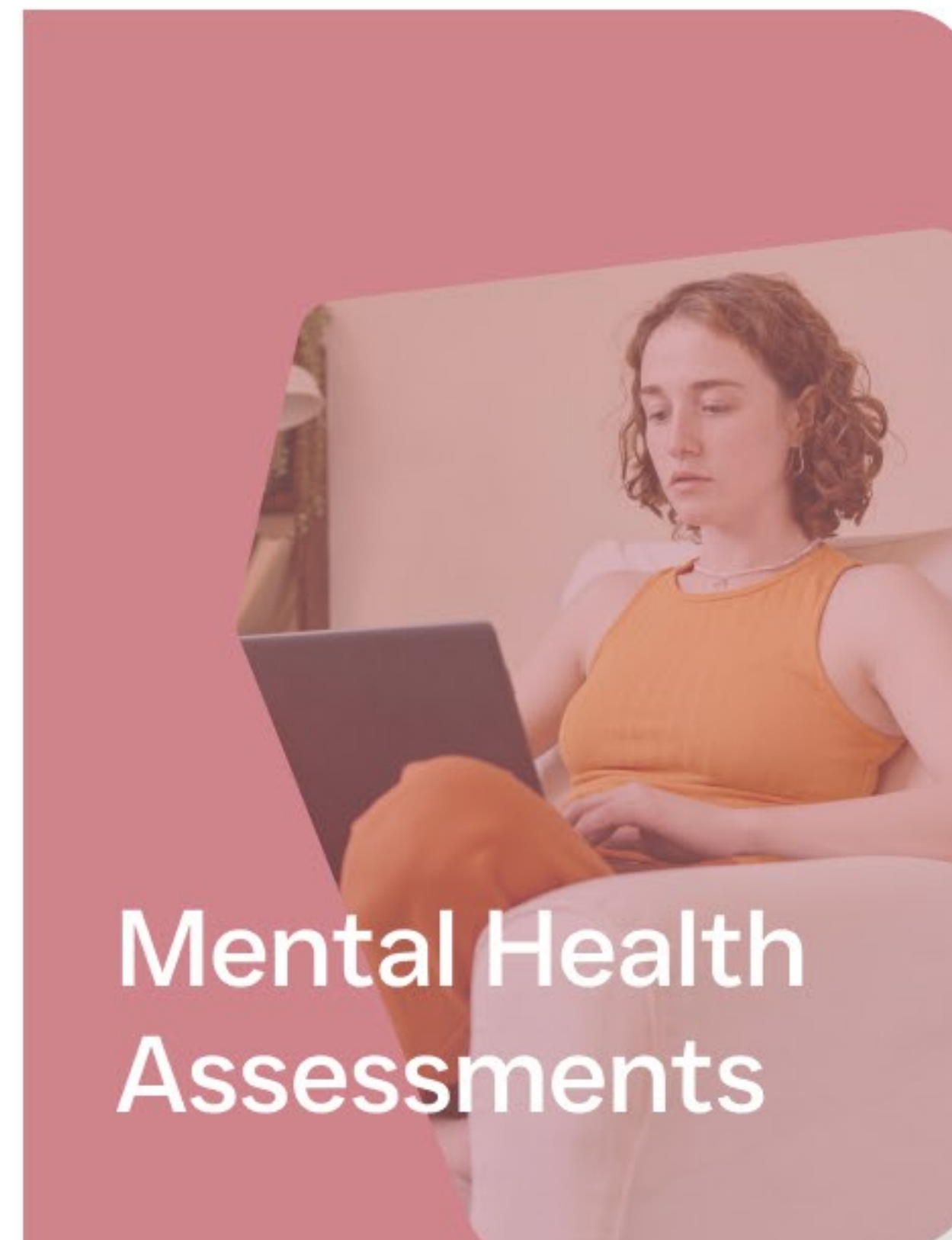
Our focus is on **wellness services** beginning with **mental health assessments** and **companion support services**.

1 / ,

Comprehensive
assessments



Self-understanding
& connection



Weekly check-ins

Navigational support
Care coordination
Compassionate guidance



Millions of people are sick.



Social
Media



Isolation &
Loneliness



Economic
Stress

Modern technology has contributed to *disempowerment*, *disconnection*, and *dependence*, largely responsible for widespread *mental illness*.



“Mental health is the defining public health crisis of our time.”

~ U.S. Surgeon General Dr. Vivek H. Murthy,
MD, MBA (May 2023)

The modern mental health care model is **fragmented and broken**

*...and is disempowering in its approach,
language, and solutions.*

Solution



Personalized Wellness Programs

Our **technology** acknowledges the completeness of each person and addresses the challenging realities at the core.

Mental Health Network

Specializing in **wellness fulfillment**, our platform serves as an infrastructure that **brings together networks** of services and communities to meet the needs of our customers.

“ We will repurpose the very technology responsible for disempowerment, dependence, and illness into digital tools for empowerment, independence, and health.”



~ **Dr. Jesse Hanson, PhD**

Co-Founder, Clinical Director



Wellness

By offering **wellness services** starting with mental health assessments and companion support services, we serve as a...

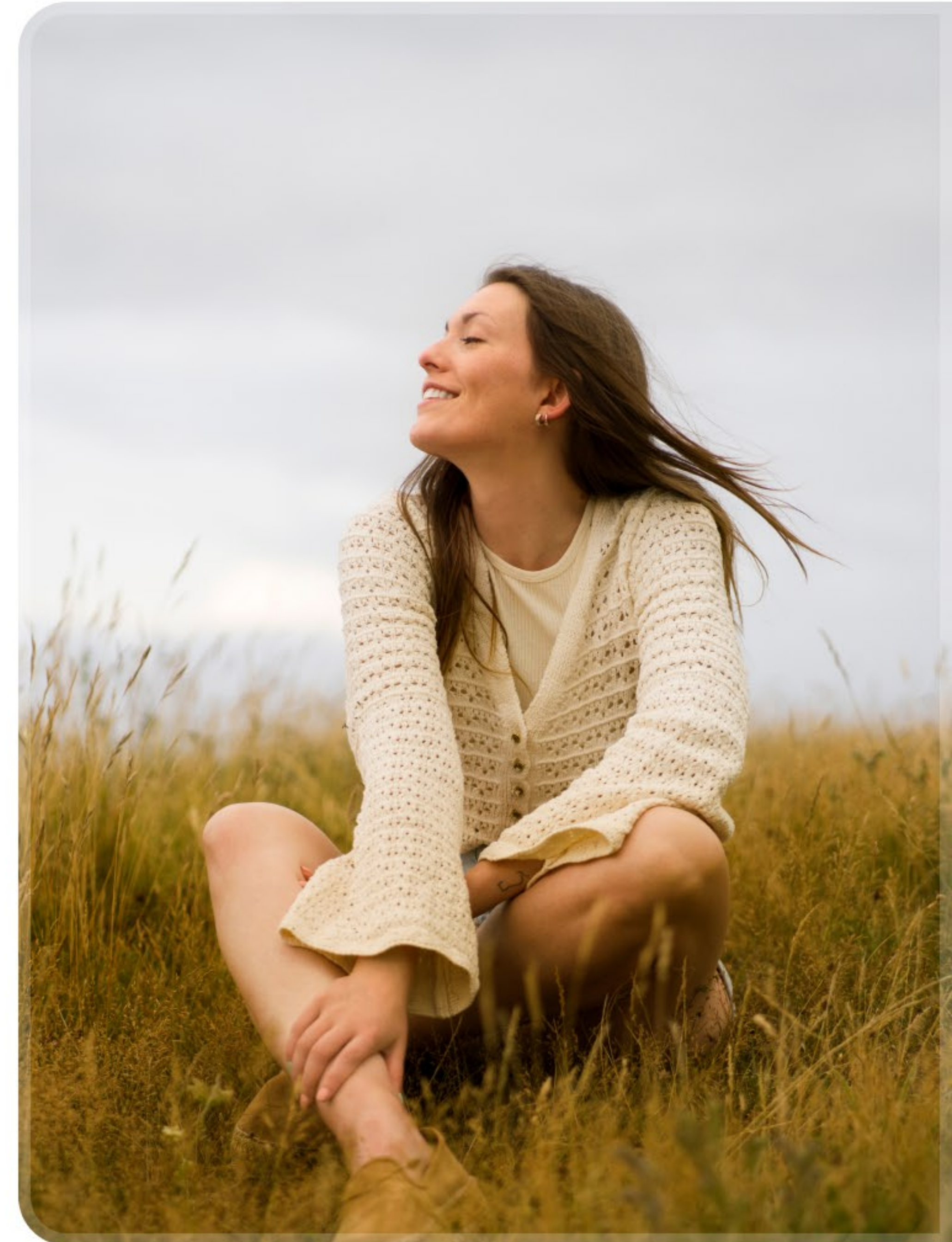
- ♥ First touchpoint in mental well-being
- ♥ Uniting resource for personalized care
- ♥ Lifelong companion in mental health support

“Technology is largely responsible for creating a mental health crisis, and technology will largely be how we solve it.”



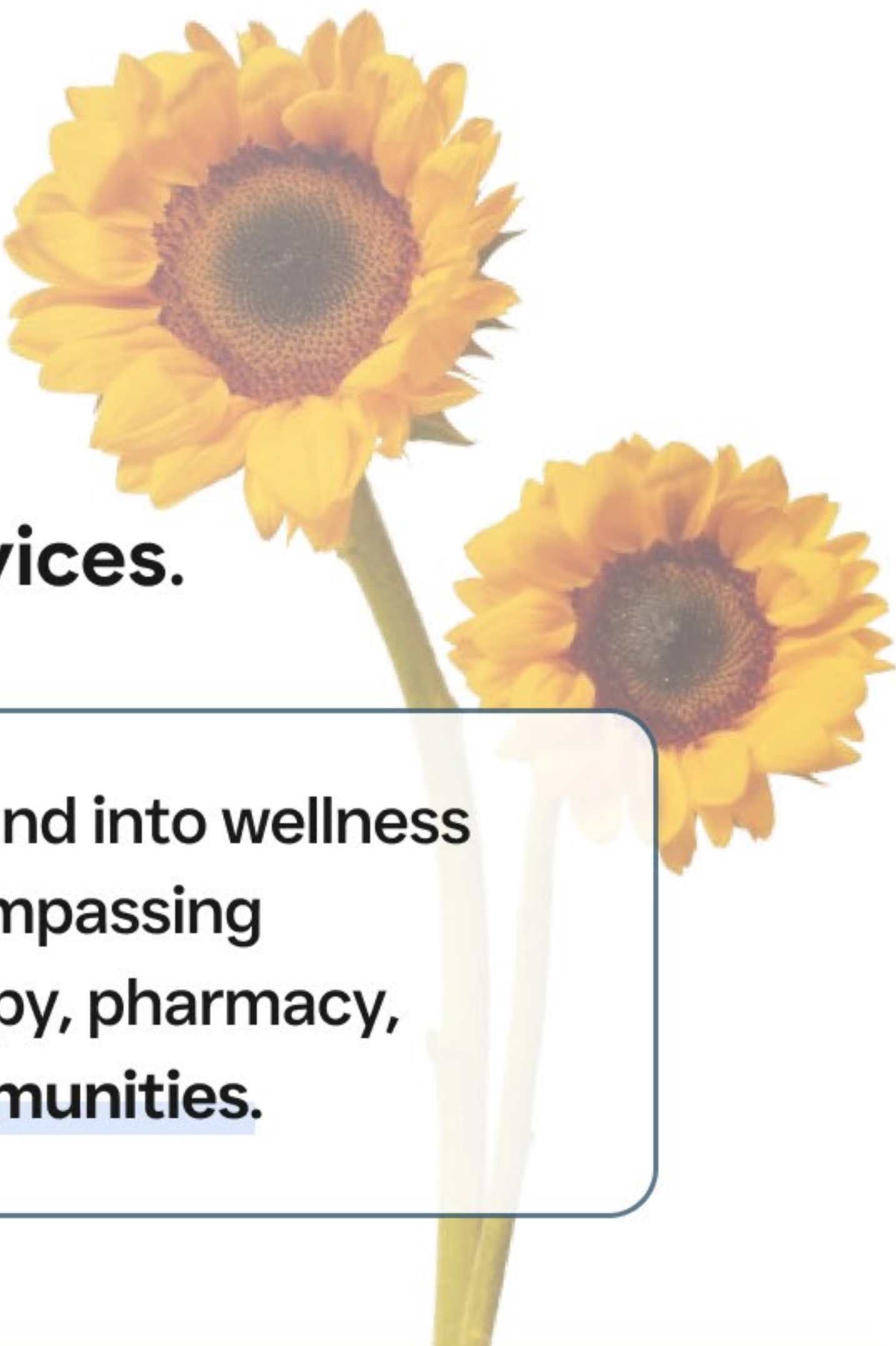
~ Patrick Nagle

Co-Founder



Model


Our business operates on a **platform model**, deriving revenue through the sale of **our own services** and earning a percentage from **third-party services**.



We offer digital informational resources, including a resource library and a **professionals directory**.

We provide personalized **wellness services** starting with mental health assessments and companion support services.

We plan to expand into wellness programs encompassing bookings, therapy, pharmacy, and **online communities**.

 Providers utilize our platform to connect with our customers.

We charge **advertising fees** and

when appropriate **collect a percentage** of revenues from transactions initiated through our platform.

 Health professionals

 Treatment providers

 Third-party sellers

Brand



MentalHealth.com instantly **establishes trust.**

Founded in 1995 *and freshly relaunched in 2023*, our platform stands as **the authority** in the global mental health and wellness market.

Most companies never attain a great brand, and those that do often invest 10s or 100s of millions of dollars, in establishing them.

Unlike most companies,
we did not wait to grow a great brand;

we started as the
❤️ **world's #1 mental health brand**

As the cornerstone of our business, **MentalHealth.com** adds value to every operation, **making everything we do easier**, creating efficiency and cost-effectiveness.

✓ **Instant credibility**

✓ **Priceless utility**

✓ **Inherent memorability**

Domain

MentalHealth.com

is our business

representing billions of potential customers in a trillion-dollar industry experiencing significant global expansion both online and offline.

🛡️ registered on April 6, 1995

🤝 acquired on June 30, 2022

⚡ billions of potential customers



Top asset in trillion dollar industry

Represents a **global market**

Category defining domain name

| **Billions** of searches

"MentalHealth.com is the world's #1 mental health brand, backed by an elite team prepared to support millions of people in their pursuit of well-being."



~ Abhilash Patel, Co-Founder of Within Health

Cars.com valued their domain at more than \$800 million dollars ¹

indicating their domain is their business. Without it, they are little to nothing more than those other guys...



Leadership

We are a diverse group of mental health experts, medical professionals, and health tech leaders, fully committed to treating others with the same kindness and respect we value for ourselves.



Leadership

Clinical Affairs Team



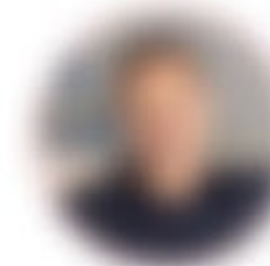
Dr. Jesse Hanson
Co-Founder, Clinical Director



Dr. David Brown
Co-Founder, Clinical Director



Dr. David Chavira
Co-Founder, Clinical Director



Dr. Jon Dugan
Co-Founder, Clinical Director



Dr. Jordan Peterson
Co-Founder, Clinical Director

Venture Advisory Team



Fred Joyal
Co-Founder, 1-800-DENTIST



Gary Saint Denis
Co-Founder, 1-800-DENTIST



Brian Trisler
Co-Founder, A Place For Mom



Abhilash Patel
Co-Founder, Within Health



Jeff Smith
CEO, Supermind Platforms

Executive Team



Daniel Rivette
Co-Founder, CEO



Patrick Nagle
Co-Founder



Helena Georgiou
Co-Founder, Director



Brandon Mimms
Co-Founder, CSO

Public Oversight Committee



Ryan Hampton
Advocate, Author



Patrick J. Kennedy
U.S. Representative, Rhode Island



Scott Gottlieb
Former FDA Commissioner



Disclaimer: Our team is currently in the recruitment process, and not all individuals shown have officially joined.

What's on our mind...

Our team's
thoughts

“

The demand for mental health services and resources is staggering. I am committed to ensuring that MentalHealth.com becomes the leading resource for everyone seeking solutions to mental health issues. As a founder of A Place for Mom, I intuitively understand the complex intersection of healthcare needs and compassionate support.”

Brian created a billion dollar company →



~ **Brian Trisler**
Co-Founder, A Place for Mom

“

Dr. Hanson's extensive psychotherapeutic experience, coupled with his unique ability to integrate modern neuroscience with traditional healing practices, establishes him as the ideal candidate to assemble the top clinical care team in the mental health space and uphold our people-first culture.”



~ **Daniel Rivette**
Co-Founder & CEO

← a few words from the boss

“

It's more important than ever for people to have access to reliable and effective resources that enable them to reach their full potential. We look forward to harnessing our extensive marketing experience and contributing to people-first innovation in a manner that simplifies care access and empowers choice.”



~ **Fred Joyal** ← Fred spent \$500M+ advertising
CEO, 1-800-DENTIST

“

“

As humanity struggles with disconnection and numbness, often seeking solace in substances and distractions, MentalHealth.com embarks on a crucial mission to support the well-being of billions worldwide. I'm proud to stand with this exceptional team committed to seeking truth and practicing compassion. This is the path to a venture with meaning.”

Jeff is a heart-centered entrepreneur →



~ **Jeff Smith**
CEO, Supermind Platforms

“

Half of the world's population will experience a mental health disorder, and all eight billion of us need ongoing mental health support and care.”



~ **Patrick Nagle** ← Patrick's companies have supported millions of people
Co-Founder

IMPACT

Global Opportunity

Mental health is a significant area of worldwide concern for policymakers and health professionals.

Approximately **1 out of every 2 people** in the world develop a mental health disorder in their lifetime².

8 billion

people benefit from ongoing mental health support and care

mental health conditions will cost

\$6 trillion

globally by 2030³

\$450B+

US market⁴

Marketscape

Healthcare Bookings

 **Zocdoc**

\$1.8B

 **Headway**

\$1B

 **care.**

\$750M

 **aPlaceforMom.**

\$1B

Teletherapy & Telemedicine

 **Cerebral**

\$4.8B

 **betterhelp**

\$2.68B

 **LifeStance**
HEALTH

\$2.54B

 **brightline**

\$750M


 **Talkiatry**

\$375M

 **talkspace**

\$540M

Mental Health & Wellness Tools

 **headspace**

\$3B

 **Calm**

\$1B

 **Woebot Health**


\$450M

 **happify**

\$350M


 **BetterMe**

\$320M

 **ĀURA**

\$60M

Employer Service Partners

 **lyra**

\$5.58B

 **spring health**


\$2.5B

 **MODERN**
HEALTH

\$1.17B

 **octave**

\$250M

 **BetterUp**

\$4.7B

Clinics

 **CVS Health.**

\$87B

 **one medical**

\$3.9B

 **connections**
Health Solutions

\$140M

Publishers

 **Psychology Today**

\$200M

 **choosing therapy**

\$50M

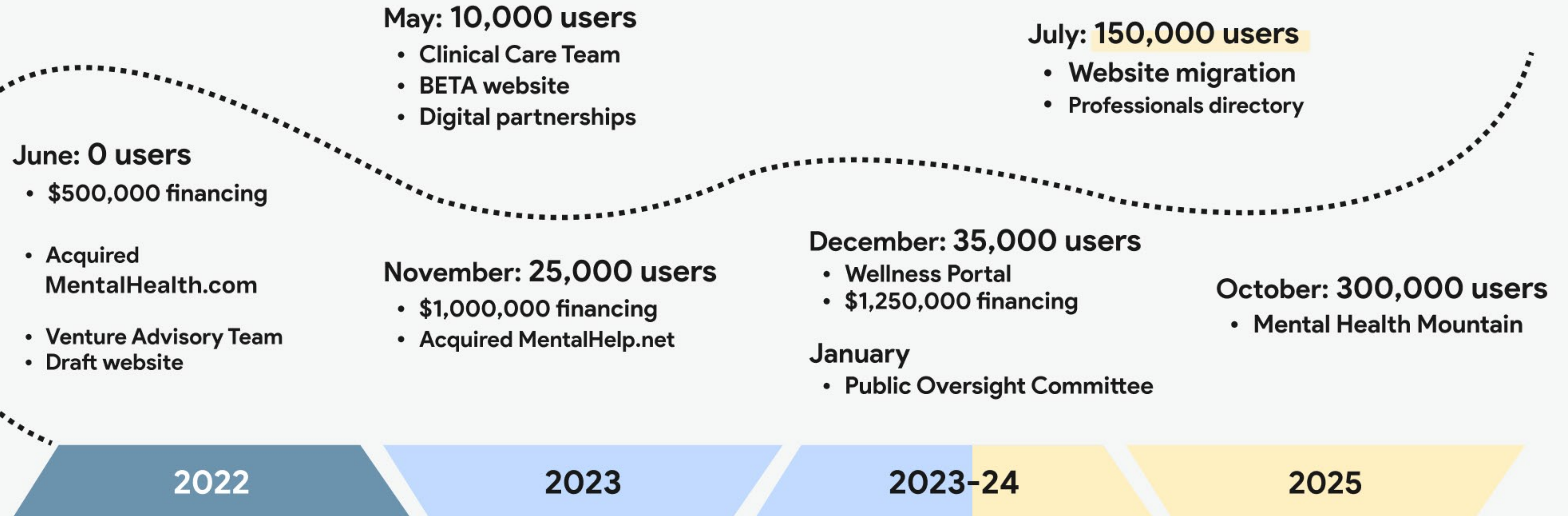
 **verywellmind**

\$35M



Achievements

*Where do we come from? What are we? **Where are we going?***



Growth

Our growth strategy is **sustainable** and prioritizes the development of digital informational resources that generate **website traffic**.

- ① **Innovation**
- ② **Acquisitions**
- ③ **Social media**
- ④ **Paid search**

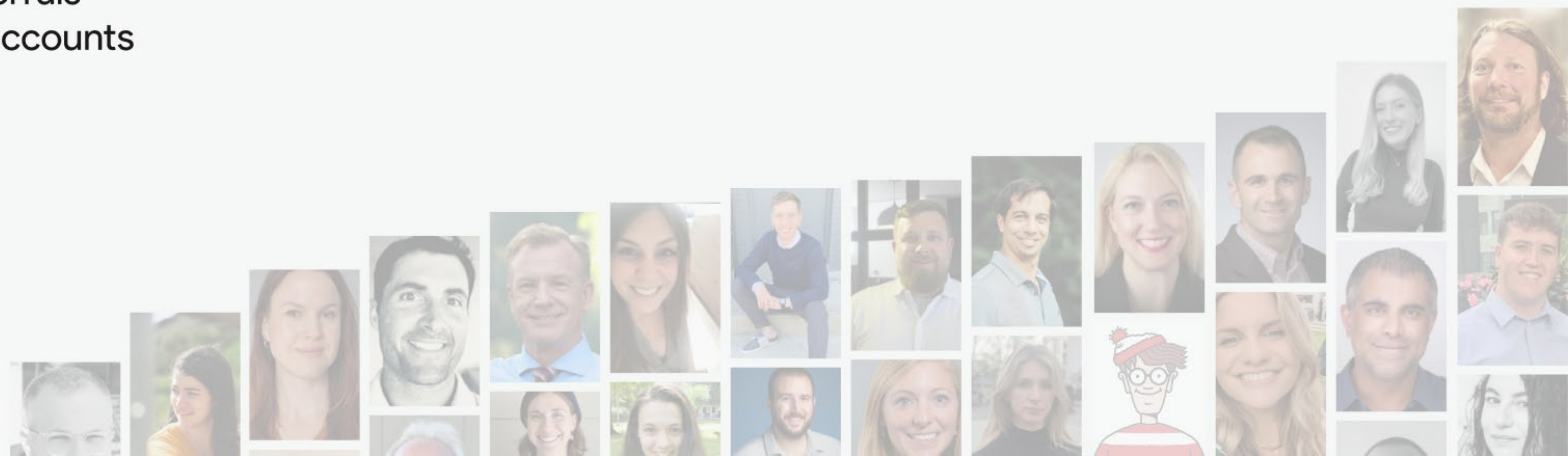
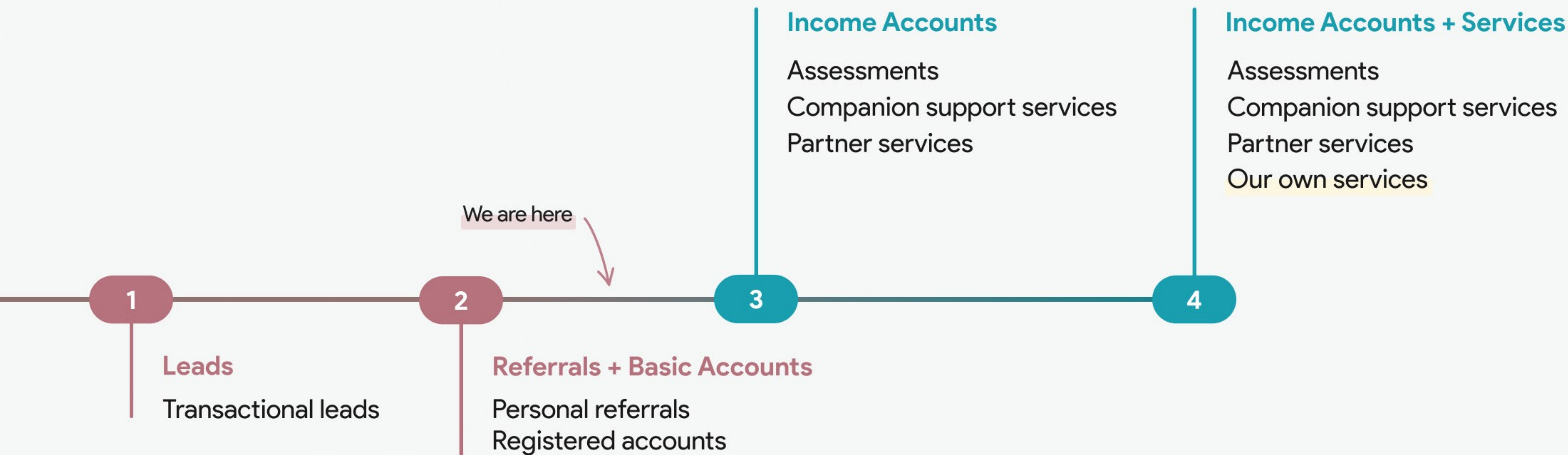
We acquired MentalHelp.net, the leading online mental health platform and community reaching over **3.8 million people annually**.

We continue to increase platform authority, and strengthen **the world's #1 mental health brand**.

We secured **15+ @mentalhealth accounts** matching our brand [Mental Health], boasting a presence of **more than 2 million followers** and receiving over 1 million daily impressions.



Evolution



PROJECTIONS

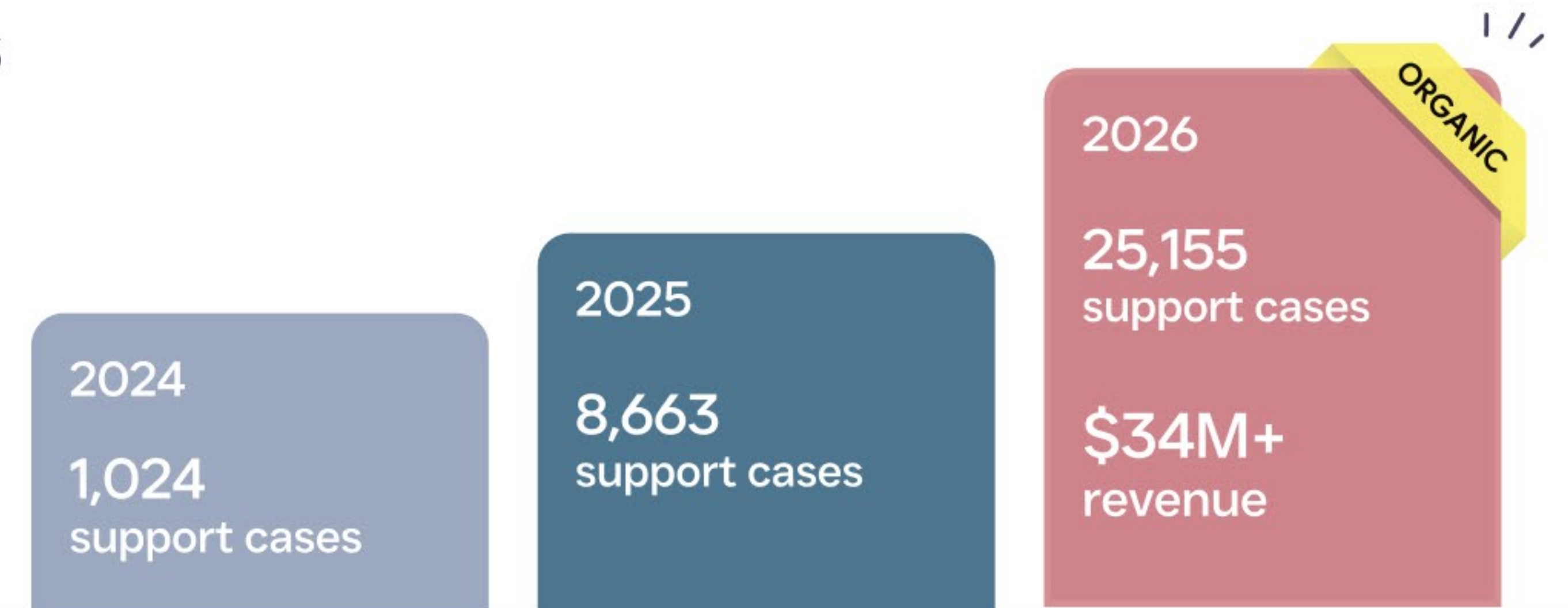
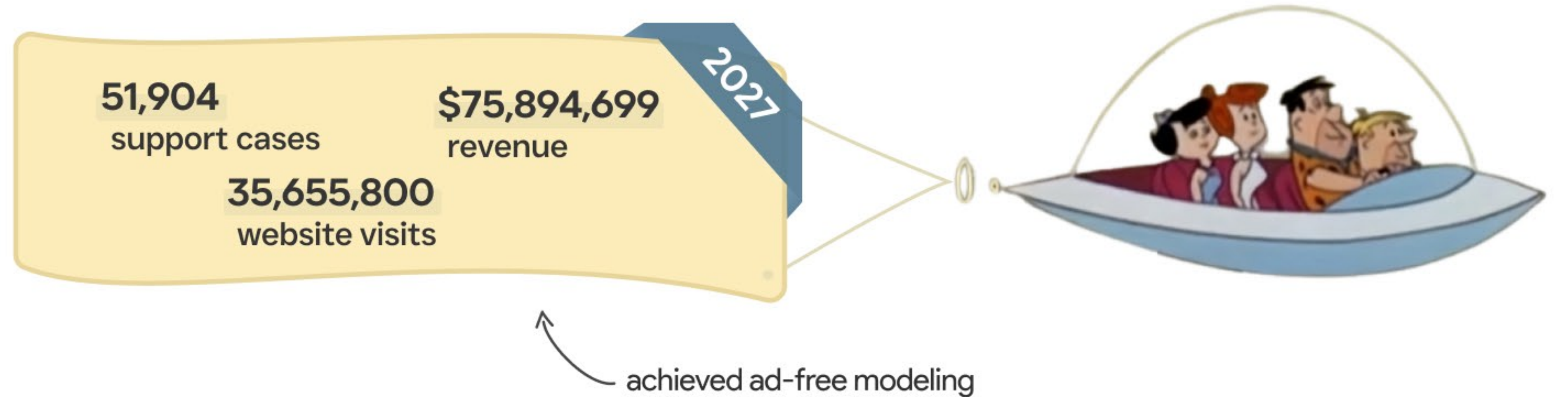
People Above all else

We will address customer needs with our own wellness services, delivered by a well-supported staff, priced sustainably, consistently exceeding customer needs.

“Ensuring profitability is vital for MentalHealth.com to finance the future innovations we seek to develop.”



~ Patrick Nagle
Co-Founder



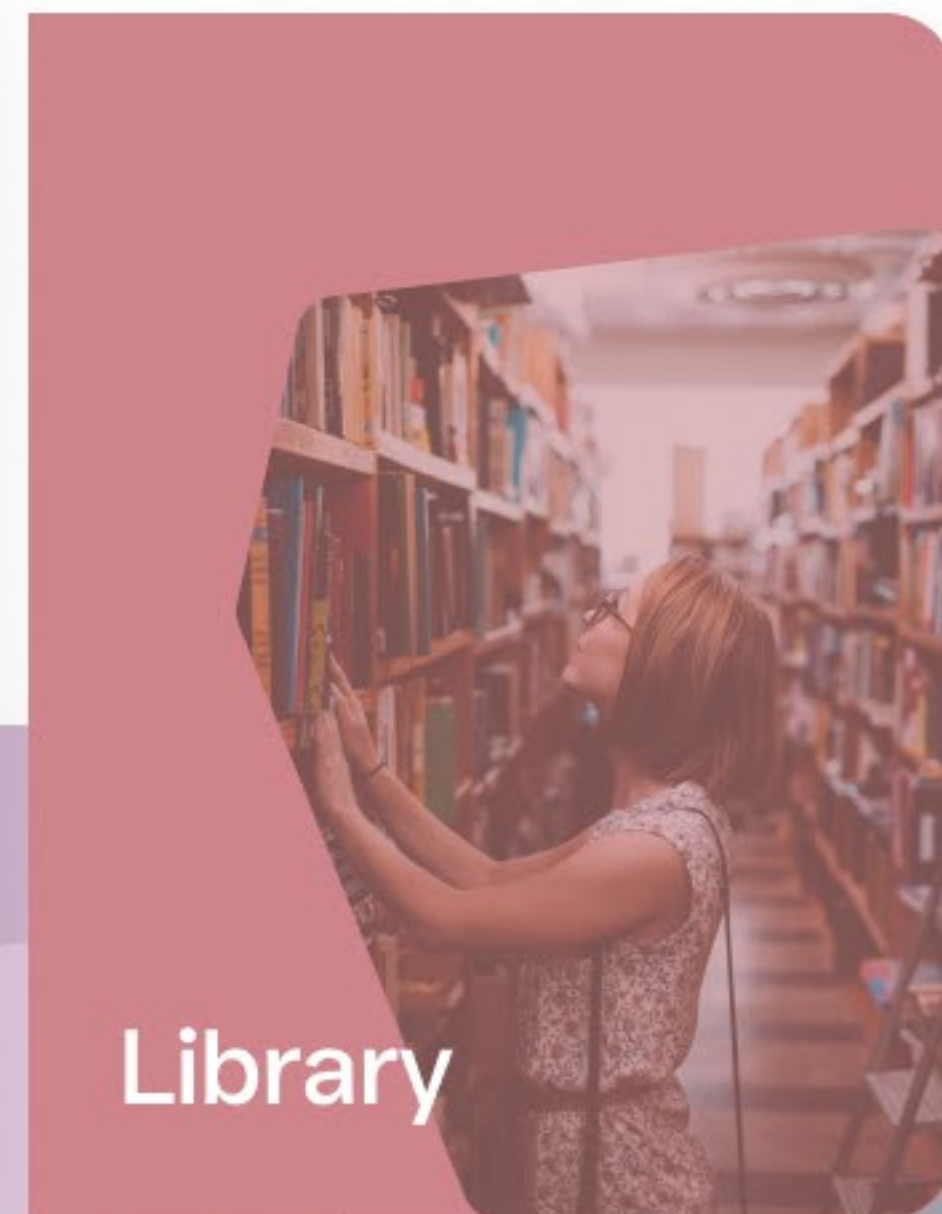
In 2026, we anticipate exceeding **10,238,500 visits** to MentalHealth.com, with more than **25,155 wellness support cases** expected to be serviced by 2027. By the end of 2027, we project revenues **surpassing \$75,894,699**.

Assets

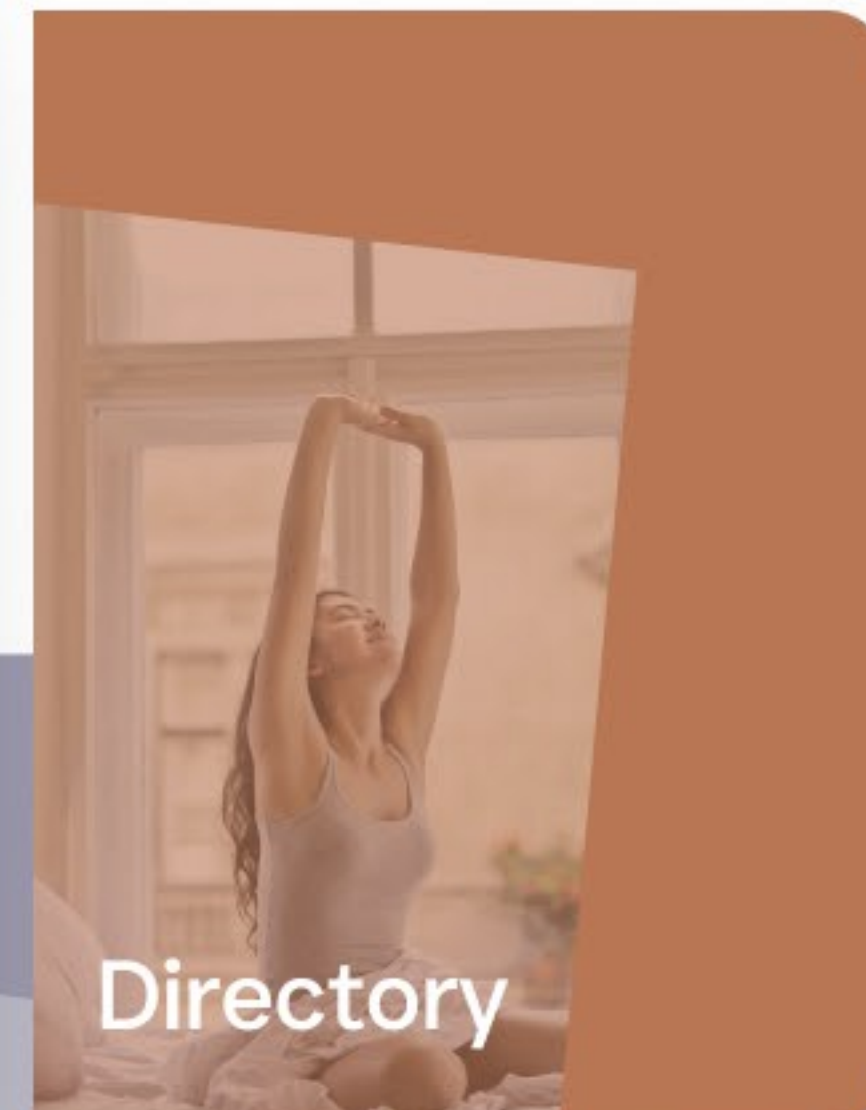
Our business boasts a **portfolio of valuable assets** strategically positioned to drive growth.



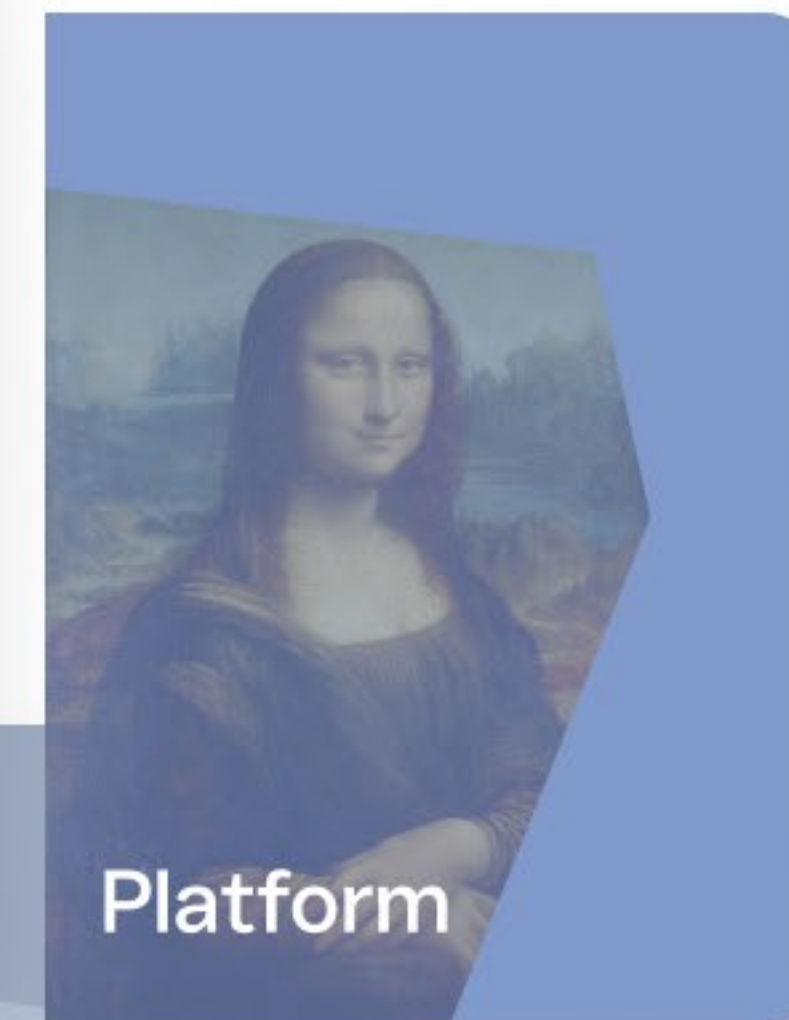
300,000+
website visits



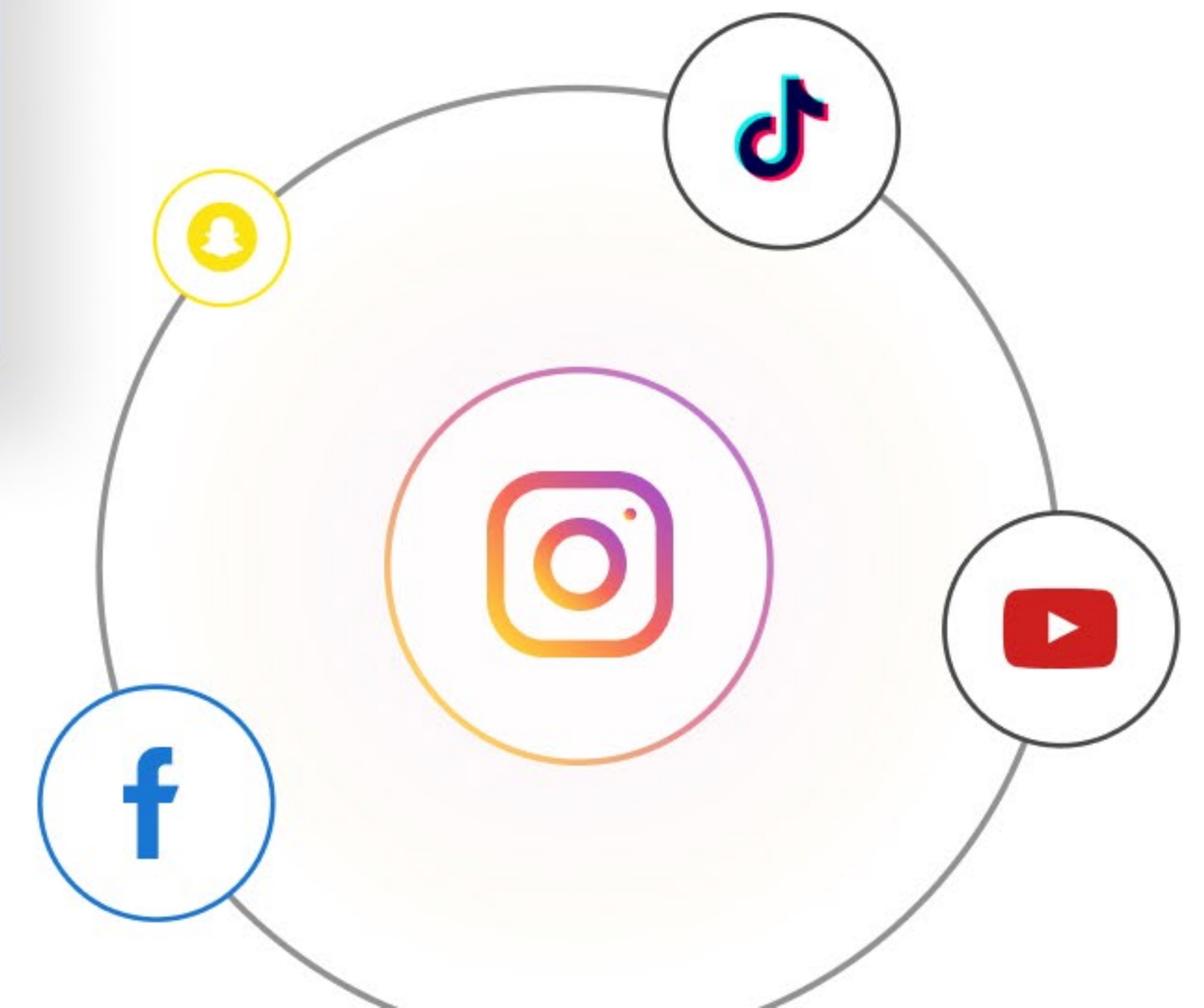
2M+ followers
1M+ daily impressions



3M+ backlinks
40+ domain authority



the world's
#1 mental health brand
@mentalhealth



Investment

We are raising funds to **enhance our technology** and strategically prepare for future financing by offsetting a portion of our existing debt.

Our investment focus is on **demonstrating demand** through customer account generation.

We achieve this by developing our own **wellness services** and by enhancing our infrastructure that connects networks of resources, services, and communities.



We will cover **operating costs** and the MentalHelp.net acquisition.

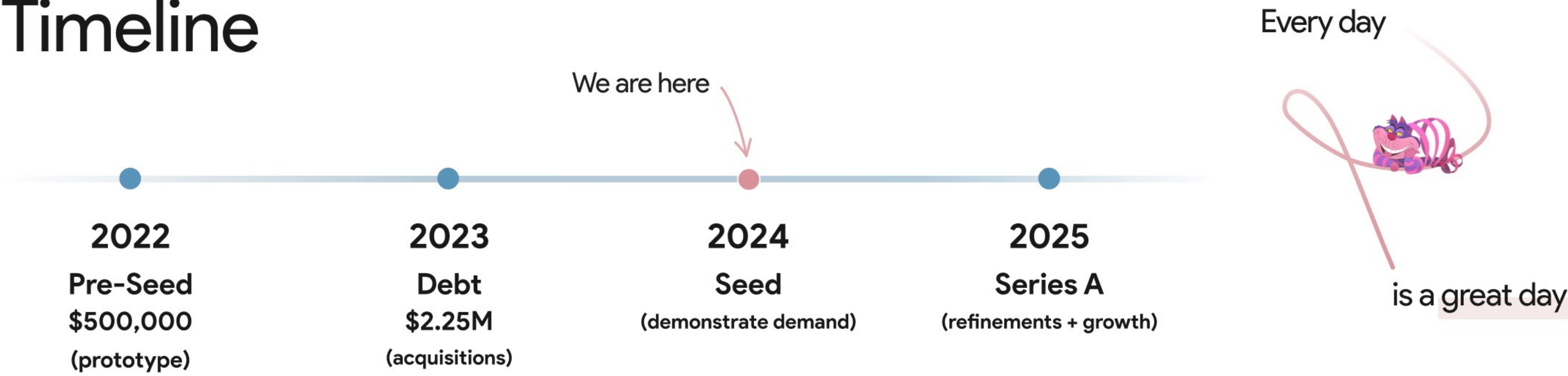
We acknowledge the importance of maintaining balance in our funding schedule. Therefore, we will leverage a portion of the funds we raise as reserves in anticipation of a future financing.

"We will continue to invest in our mental health resources and professionals directory, increasing platform authority, and driving growth."

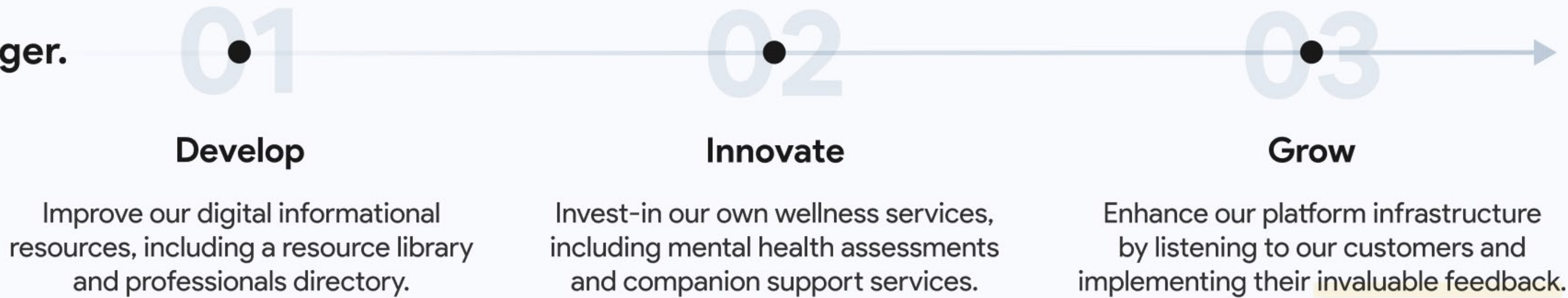


~ Daniel Rivette, Co-Founder & CEO

Timeline



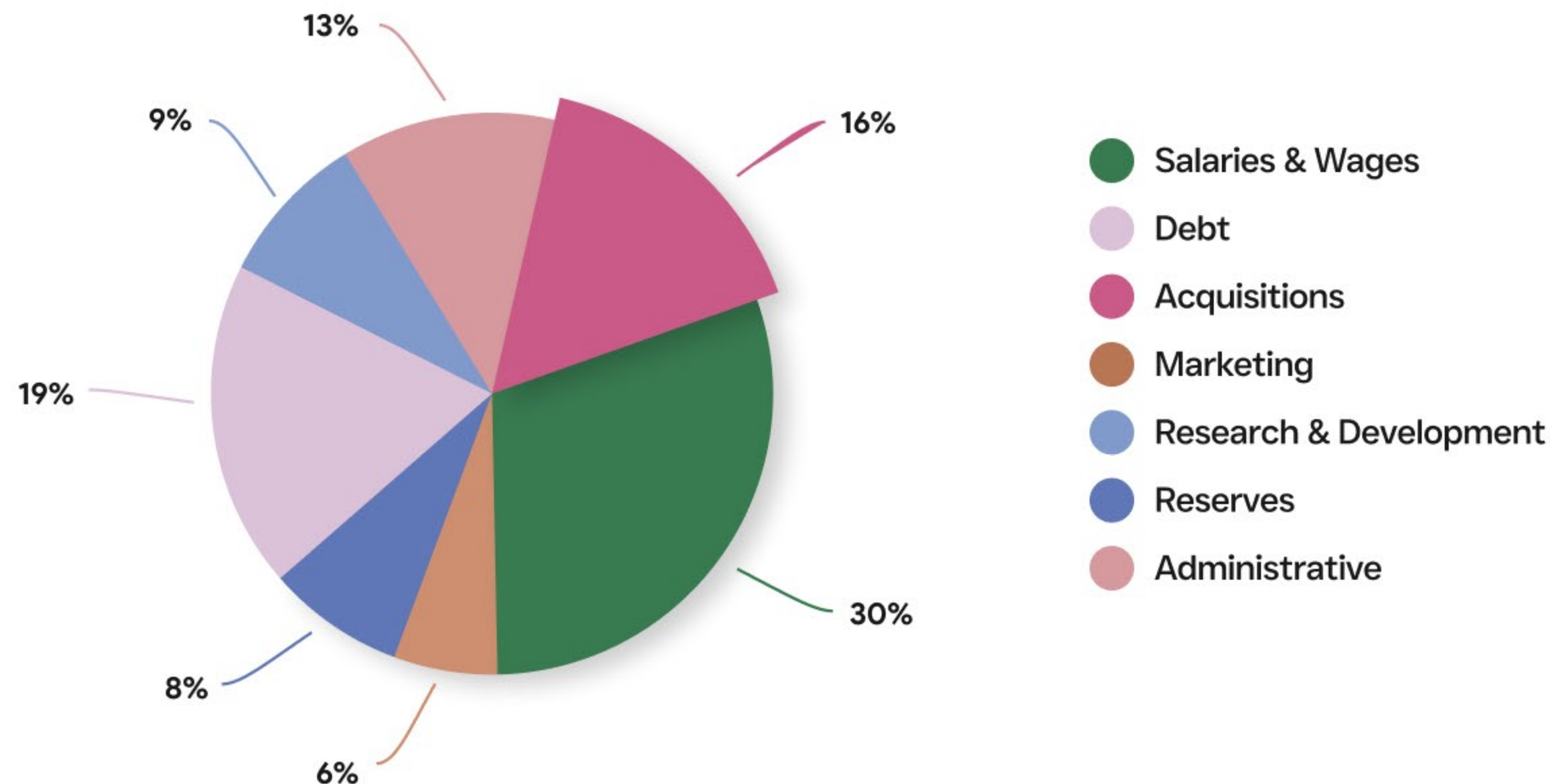
Bigger. Faster. Stronger.



Funding

MentalHealth.com has deliberately and strategically elected debt financing over equity to **preserve equity ownership** and maintain control over business operations and assets.

This approach aligns with our commitment to **strategic decision-making** and **long-term sustainability**.



June 2022 raised **\$500,000** in equity financing from Cicada Capital, LLC

Nov 2023 raised **\$1.1M** in debt financing from Cicada Capital, LLC and Supermind Platforms, Inc.

Dec 2023 raised **\$500,000** in debt financing from Cicada Capital, LLC

raised **\$650,000** in debt financing from Joseph Hahn, CPA, Jon Cohen, and Brandon Mimms





TEAM



“We need a systemic shift in our consciousness around mental health. For too long, the ideas of disorders and diseases have permeated our minds, hearts, and mental health care systems. The modern mental health care model focuses on what is wrong, instead of what is right. It focuses on treating superficial symptoms, rather than facing the tough truths of root causes. It centers on fear, perpetuating *dis·ease* and a sense of ‘smallness’ in the patient, rather than centering on love and recognizing the wholeness of who a person actually is. Furthermore, it focuses on treating symptoms in separation, rather than exploring the intricate interconnectedness and undeniable correlations between our mind and body.”



~ **Dr. Jesse Hanson, PhD**

Co-Founder, Clinical Director



WAKE UP!

Disclaimer

Forward-looking statements and limitation of liability. This presentation includes forward-looking statements based on the current expectations of MentalHealth.com, LLC. These statements, which may use terms like "may," "will," "could," "expect," and similar expressions, reflect anticipated future events but are subject to inherent risks and uncertainties. As a result, actual outcomes may differ materially due to factors such as changes in market conditions, economic factors, or regulatory changes.

This presentation is not an offer or solicitation to buy or sell any securities. Investors should not place undue reliance on these forward-looking statements, as they may change. MentalHealth.com, LLC does not assume liability for any losses or damages resulting from reliance on this presentation, and makes no representations regarding the completeness or accuracy of the information provided. While every effort has been made to ensure the accuracy of the information, we cannot guarantee its completeness. We recommend that investors conduct their own due diligence and seek professional advice.

Copyright © 2024 MentalHealth.com, LLC. All Rights Reserved.

